

Materia Viva

a matter of light and space



**ASCOT** DOM  
DESIGN  
LAB

*Materia Viva*

MARBLE EFFECT

**GRES PORCELLANATO COLORATO IN MASSA SMALTATO – RETTIFICATO**  
 Glazed colored body fine porcelain stoneware – Rectified



BIANCONE



MISTIK BROWN

Spaces that speak of elegance, where light gently touches matter.  
 Where time becomes style.



120x280  
48"x110" Rett



120x120  
48"x48" Rett



60x120  
24"x48" Rett



60x60  
24"x24" Rett



30x60  
12"x24" Rett

3D Honed 9 mm

● BIANCONE

● MISTIK BROWN

● BIANCONE

● MISTIK BROWN

● BIANCONE

● MISTIK BROWN

● BIANCONE

● MISTIK BROWN

3D Honed 6 mm

● BIANCONE

● MISTIK BROWN

Con la tecnologia *in primix* ogni singolo dettaglio delle superfici calcaree e cementizie a cui si ispirano le collezioni Ascot viene impresso sulle lastre in gres con una precisione tale da rendere ancora più labile la distinzione tra materia ceramica e materia originaria. Impianti sofisticati di ultima generazione consentono applicazioni selettive di colla e graniglia che creano rilievi tridimensionali perfettamente sincronizzabili con la grafica digitale ad alta definizione, conferendo un aspetto materico estremamente realistico e una qualità visiva inedita al prodotto ceramico.

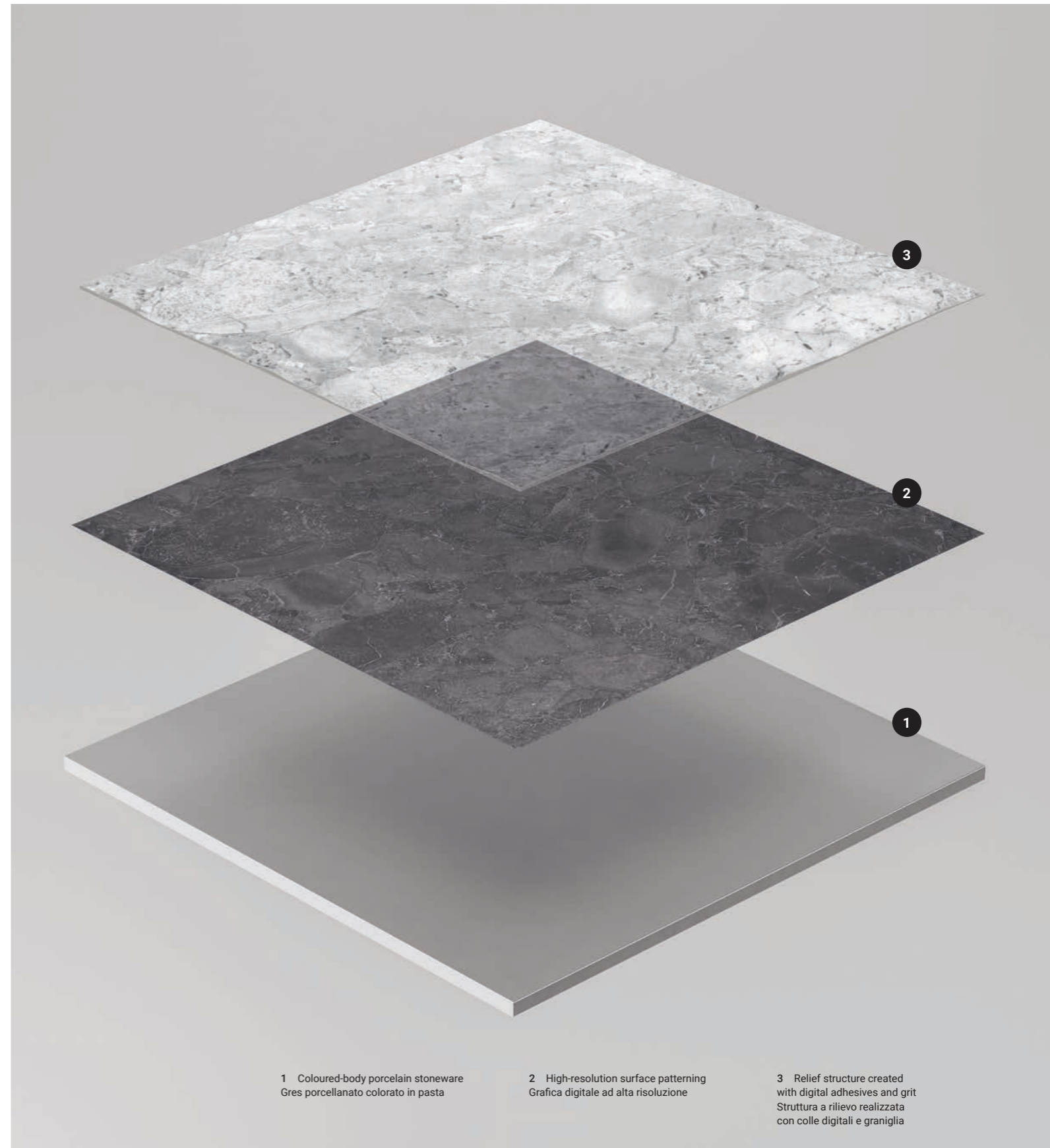
With the *in primix* technology, every single detail of the Ascot collections' limestone and concrete inspiration surfaces is impressed on the stoneware slabs with such precision that the distinction between ceramic covering and original material becomes even more unclear. Sophisticated, latest-generation plants enable selective applications of adhesive and grit, creating three-dimensional relief textures perfectly synchronised with the high-definition digital patterning, giving the ceramic product an extremely realistic material effect and an unprecedented visual quality.

**FR** Grâce à la technologie *in primix*, le moindre détail des surfaces calcaires et à base de ciment dont s'inspirent les collections Ascot est imprimé sur les dalles en grès avec une précision telle que la distinction entre le matériau céramique et la pierre d'origine s'estompe toujours plus. Des équipements de pointe de dernière génération permettent des applications sélectives de colle et de granulats. Ceci crée des reliefs tridimensionnels pouvant être parfaitement synchronisés avec des graphiques numériques haute définition, conférant ainsi au produit céramique un aspect de matière extrêmement réaliste et une qualité visuelle entièrement nouvelle.

**DE** Mit der *in primix* Technik wird jedes einzelne Detail der Kalkstein- und Betonoberflächen, an denen die Ascot Kollektionen inspiriert sind, auf die Feinsteinzeugfliesen aufgedruckt, und zwar in einer Präzision, die die Unterscheidung zwischen Keramikmaterial und ursprünglichem Stein noch schwerer macht. Hochmoderne spezielle Anlagen ermöglichen die selektive Auftragung von Kleber und Granulat zur Erzeugung von dreidimensionalen Strukturen, die durch den High-Definition-Digitaldruck perfekt aufeinander abgestimmt werden können und dem Keramikprodukt einen extrem realistischen, materialbetonten Aspekt und eine völlig neuartige optische Qualität verleihen.

**ES** Con la tecnología *in primix* cada uno de los detalles de las superficies calizas y cementosas en que se inspiran las colecciones Ascot se imprime en las placas de gres con una precisión tal que hace aún más difícil distinguir la materia cerámica de la materia originaria. Unas sofisticadas instalaciones de última generación permiten llevar a cabo unas aplicaciones selectivas de cola y gravilla que crean relieves tridimensionales perfectamente sincronizables con el diseño gráfico digital de alta definición, confiriéndole al producto cerámico un aspecto matérico extremadamente realista y un aspecto visual inédito.

**RU** Благодаря технологии *in primix* каждая отдельная деталь известняков и цемента, являющихся источником вдохновения коллекции Ascot, наносится на керамогранитные плиты с такой высокой степенью точности, что разница между керамическим материалом и исходным материалом практически исчезает. Высокотехнологичные системы нового поколения обеспечивают выборочное нанесение клея и крошки для получения трехмерного рельефа, точно совпадающего с цифровой графикой высокого разрешения, создавая керамические изделия с очень реалистичным фактурным эффектом и невиданным ранее визуальным качеством.



1 Coloured-body porcelain stoneware  
Gres porcellanato colorato in pasta

2 High-resolution surface patterning  
Grafica digitale ad alta risoluzione

3 Relief structure created  
with digital adhesives and grit  
Struttura a rilievo realizzata  
con colle digitali e graniglia

## 3D Honed

Grazie a un innovativo sistema digitale di ultima generazione, le linee produttive di Ascot raggiungono nuovi livelli di realismo. Questa tecnologia avanzata permette di creare effetti materici tridimensionali perfettamente sincronizzati con decorazioni ad alta definizione. Il processo si conclude con una lavorazione della superficie che combina rettifica e lappatura, ottenendo la finitura 3D Honed caratterizzata da un'elevata satinatura. L'unione tra tridimensionalità ed effetto satinato-matte dona alle superfici una morbidezza setosa, raffinata e dall'aspetto naturale.

Thanks to an innovative state-of-the-art digital system, Ascot's production lines reach new levels of realism. This advanced technology enables the creation of three-dimensional material effects perfectly synchronized with high-definition decorations. The process is completed with a surface treatment that combines grinding and honing, resulting in the 3D Honed finish characterized by a high satin sheen. The combination of three-dimensionality and a satin-matte effect gives the surfaces a silky, refined softness with a natural appearance.

**FR** Équipées d'un extraordinaire système numérique de dernière génération, les lignes de production d'Ascot atteignent de nouveaux sommets de réalisme. Cette technologie avancée permet de créer des effets de matières tridimensionnels, parfaitement synchronisés avec des décorations en haute définition. Le processus se termine par un façonnage de surface qui associe rectification et rodage, donnant naissance à la finition 3D Honed, caractérisée par un satinage élevé. La combinaison de la tridimensionnalité et de l'effet satiné-mat confère aux surfaces une douceur soyeuse, raffinée et d'apparence naturelle.

**DE** Dank eines innovativen digitalen Systems der neuesten Generation sind die Produktionsanlagen von Ascot in der Lage, die Realität noch getreuer nachzuahmen. Mit dieser fortgeschrittenen Technologie lassen sich dreidimensionale Materialoptiken erstellen, die auf hochauflösende Dekorationen perfekt abgestimmt werden. Abschließend erfolgt eine Bearbeitung der Oberfläche mit Rektifizierung und Läppen, um das fein satinierte Finish 3D Honed zu erhalten. Die Kombination zwischen Dreidimensionalität und satiniert-matter Optik verleiht den Oberflächen eine seidige, raffinierte und natürlich wirkende Geschmeidigkeit.

**ES** Gracias a un innovador sistema digital de última generación, las líneas de producción de Ascot alcanzan nuevos niveles de realismo. Esta tecnología avanzada permite crear efectos matéricos tridimensionales perfectamente sincronizados con decoraciones de alta definición. El proceso se concluye con un mecanizado de la superficie que combina la rectificación y el pulido para obtener el acabado 3D Honed, caracterizado por su alto nivel de satinado. La unión entre la tridimensionalidad y el efecto satinado-mate dona a las superficies una suavidad sedosa, refinada y de aspecto natural.

**RU** Благодаря инновационной цифровой системе последнего поколения производственные системы Ascot выходят на новые уровни реалистичности. Эта передовая технология позволяет создавать объемные фактурные эффекты, которые безупречно сочетаются с декорами высокого разрешения. Процесс завершается обработкой поверхности, предусматривающей шлифовку и полировку, позволяющей получать отделку 3D Honed с выраженной шелковистостью. Сочетание объемности и матово-сатинированного эффекта наделяет поверхности изысканной шелковистой матовостью с естественным видом.



**Materia Viva nasce dall'incontro tra due marmi che interpretano luce e profondità: Biancone luminoso e essenziale, Mistik Brown caldo e avvolgente. Insieme creano equilibrio, eleganza e autenticità in ogni ambiente. La finitura 3D HONED accarezza le superfici con profondità alla vista e al tatto. I decori aggiungono ritmo e composizioni progettuali. Un linguaggio materico senza tempo, pensato per l'architettura contemporanea.**

Materia Viva takes shape from two marbles that interpret light and depth: Biancone, bright and essential, and Mistik Brown, warm and enveloping. Together they create balance, elegance, and authenticity in every space. The 3D HONED finish enhances visual and tactile depth with a soft, satin touch. Decorative elements introduce rhythm and architectural compositions. A timeless material language, designed for contemporary architecture.



FR Materia Viva naît de la rencontre entre deux marbres qui interprètent la lumière et la profondeur : Biancone lumineux et essentiel, Mistik Brown chaud et enveloppant. Ensemble, ils créent équilibre, élégance et authenticité dans chaque espace. La finition 3D HONED caresse les surfaces avec une profondeur visuelle et tactile. Les décors ajoutent du rythme et des compositions architecturales. Un langage matériel intemporel, pensé pour l'architecture contemporaine.

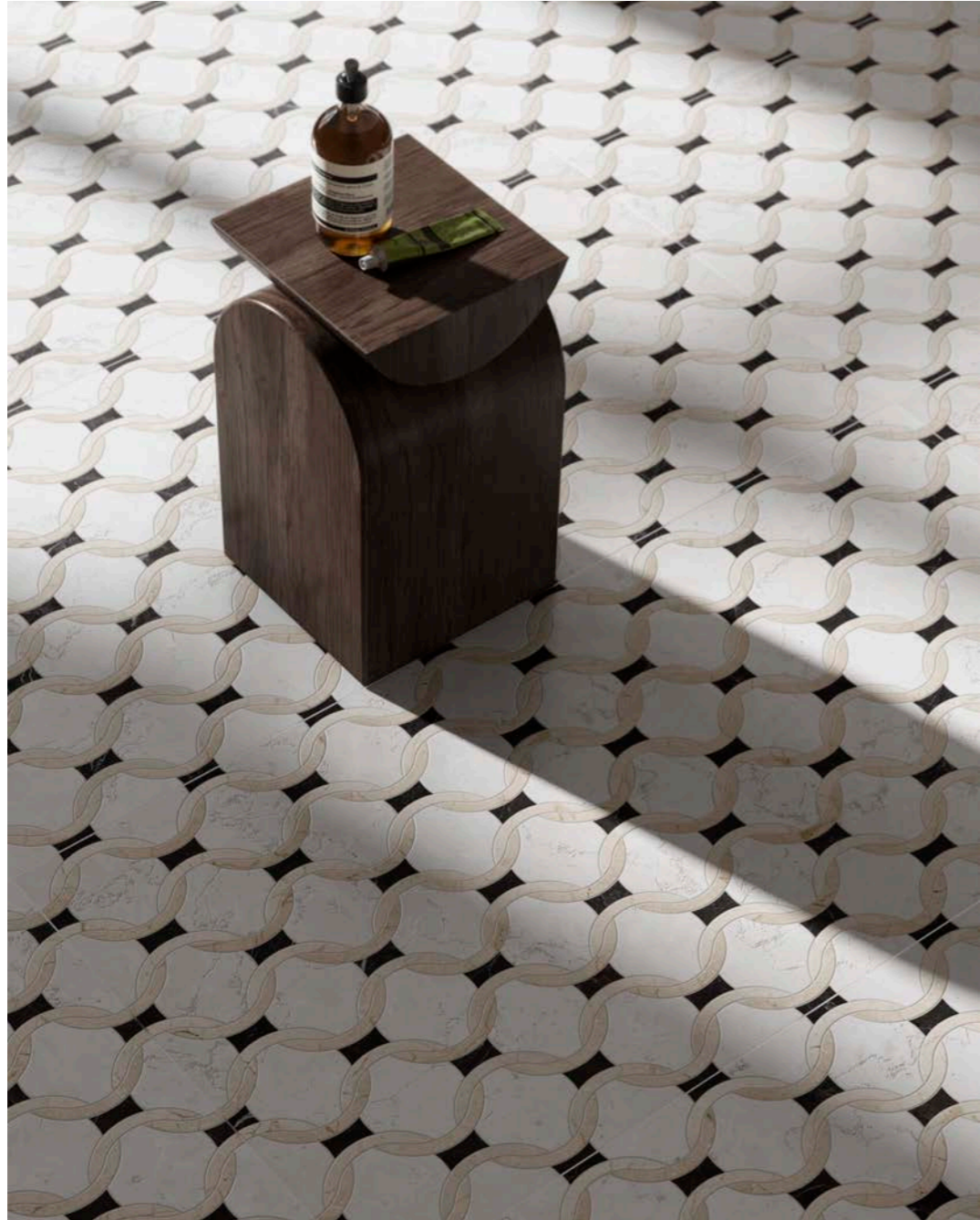
DE Materia Viva entsteht aus der Begegnung zweier Marmore, die Licht und Tiefe interpretieren: Biancone hell und essenziell, Mistik Brown warm und umhüllend. Gemeinsam schaffen sie Gleichgewicht, Eleganz und Authentizität in jedem Raum. Die 3D-HONED-Oberfläche verleiht den Flächen visuelle und haptische Tiefe. Die Dekore fügen Rhythmus und gestalterische Kompositionen hinzu. Eine zeitlose materielle Sprache, konzipiert für die zeitgenössische Architektur.

ES Materia Viva nace del encuentro entre dos mármoles que interpretan luz y profundidad: Biancone luminoso y esencial, Mistik Brown cálido y envolvente. Juntos crean equilibrio, elegancia y autenticidad en cada espacio. El acabado 3D HONED acaricia las superficies con profundidad visual y táctil. Los decorados añaden ritmo y composiciones proyectuales. Un lenguaje matérico atemporal, pensado para la arquitectura contemporánea.

RU Materia Viva рождается из встречи двух мраморов, воплощающих свет и глубину: Biancone — светлый и лаконичный, Mistik Brown — тёплый и обволакивающий. Вместе они создают баланс, элегантность и подлинность в любом пространстве. Отделка 3D HONED придаёт поверхностям визуальную и тактильную глубину. Декоры добавляют ритм и проектные композиции. Вневременной материальный язык, созданный для современной архитектуры.







MATERIA VIVA DECORO AURELIA 3D HONED / 60x120 24"x48"

MATERIA VIVA DECORO SIENNA 3D HONED / 60x120 24"x48" - 120x280 SLABS BIANCONE 3D HONED / 120x280 48"x110"



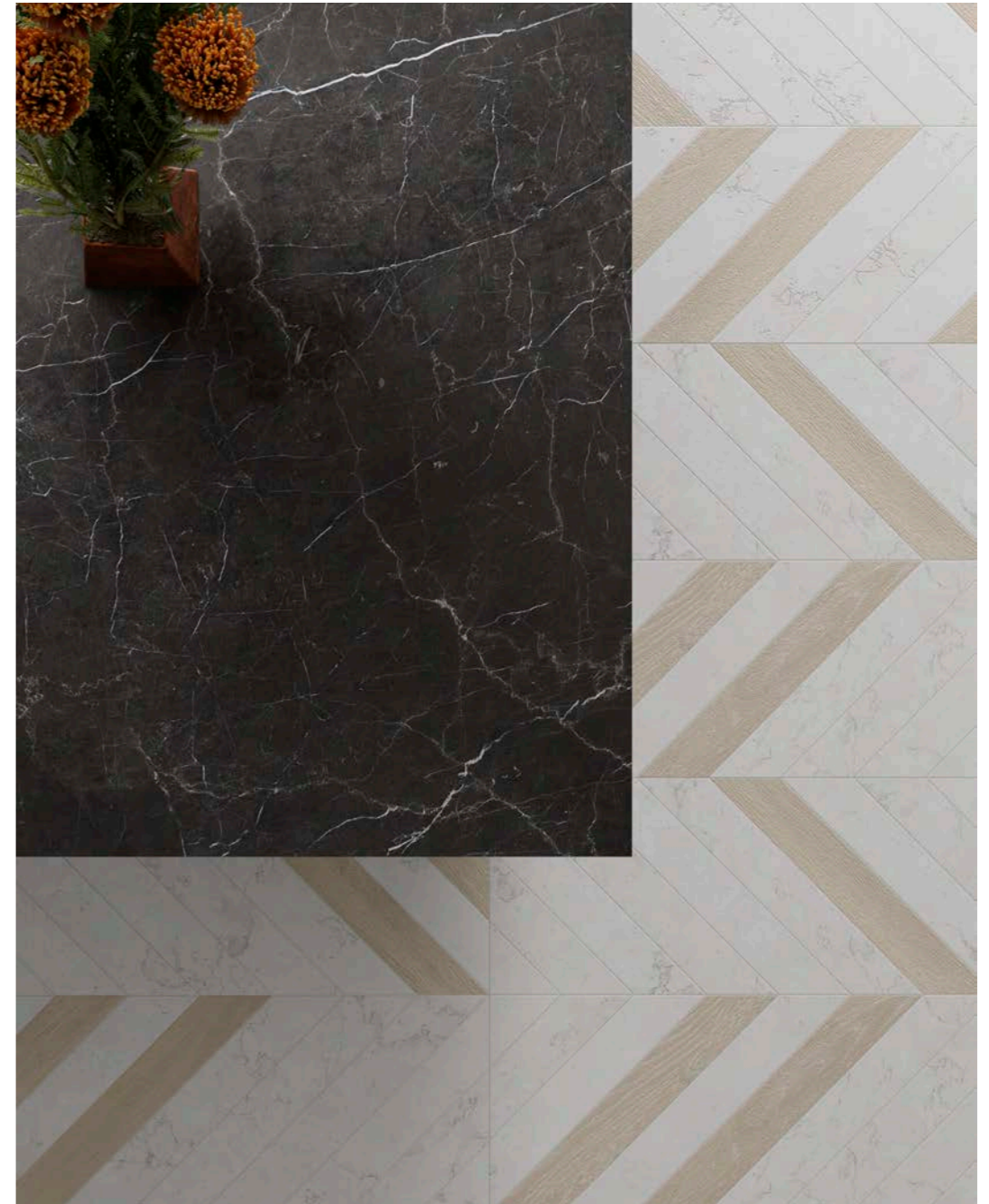




MATERIA VIVA MOSAICO RITMO 3D HONED / 30x60 12"x24" - MISTIK BROWN 3D HONED / 120x120 48"x48"  
 PIGMENTA MUD 120x120 48"x48"



MATERIA VIVA DECORO MIRO 3D HONED / 60x120 24"x48"  
 120x280 SLABS MISTIK BROWN 3D HONED / 120x280 48"x110"



Materia Viva, redefining the essence of marble through surfaces, light, and architectural decors.



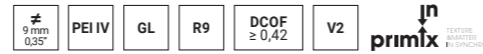
Materia Viva

BIANCONE

MARBLE EFFECT

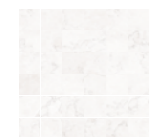


**GRES PORCELLANATO COLORATO IN MASSA SMALTATO – RETTIFICATO**  
Glazed colored body fine porcelain stoneware – Rectified



3D Honed 9 mm

- 120x120 48"x48" Rett **A2MAT00410TS** ■
- 60x120 24"x48" Rett **A2MAT00210TS** ■
- 60x60 24"x24" Rett **A2MAT00610TS** ■
- 30x60 12"x24" Rett **A2MAT00310TS** ■



MOSAICO 5x5  
BIANCONE

30x30 12"x12"  
3D Honed  
**A2MAT105X5M** ▲



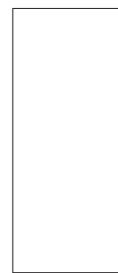
MOSAICO INTARSIA  
BIANCONE

30x30 12"x12"  
3D Honed  
**A2MAT10INTM** ▲



MOSAICO RITMO  
BIANCONE

30x60 12"x24"  
3D Honed  
**A2MAT10RITM** ▲



**120x280 Slabs**  
BIANCONE

3D Honed 6 mm  
120x280 48"x110" Rett **A2MAT80010T** ■

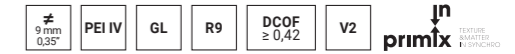
Materia Viva

MISTIK BROWN

MARBLE EFFECT

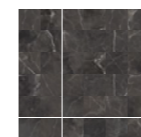


**GRES PORCELLANATO COLORATO IN MASSA SMALTATO – RETTIFICATO**  
Glazed colored body fine porcelain stoneware – Rectified



3D Honed 9 mm

- 120x120 48"x48" Rett **A2MAT00460TS** ■
- 60x120 24"x48" Rett **A2MAT00260TS** ■
- 60x60 24"x24" Rett **A2MAT00660TS** ■
- 30x60 12"x24" Rett **A2MAT00360TS** ■



MOSAICO 5x5  
MISTIK BROWN

30x30 12"x12"  
3D Honed  
**A2MAT605X5M** ▲



MOSAICO INTARSIA  
MISTIK BROWN

30x30 12"x12"  
3D Honed  
**A2MAT60INTM** ▲



MOSAICO RITMO  
MISTIK BROWN

30x60 12"x24"  
3D Honed  
**A2MAT60RITM** ▲



**120x280 Slabs**  
MISTIK BROWN

3D Honed 6 mm  
120x280 48"x110" Rett **A2MAT80060T** ■

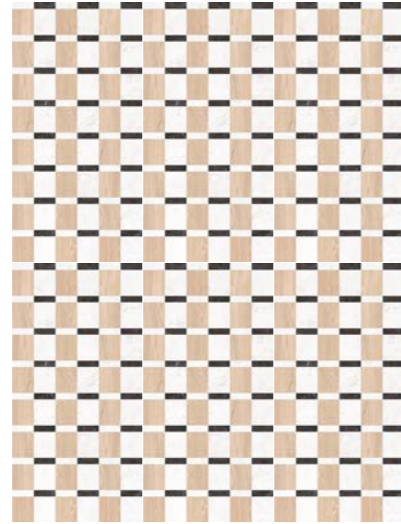
# Materia Viva

9 mm 0,35" PEI IV GL R9 DCOF ≥ 0,42 V2 primix TEXTURE MARBEE AL FINCHIO

## DECORI Decors



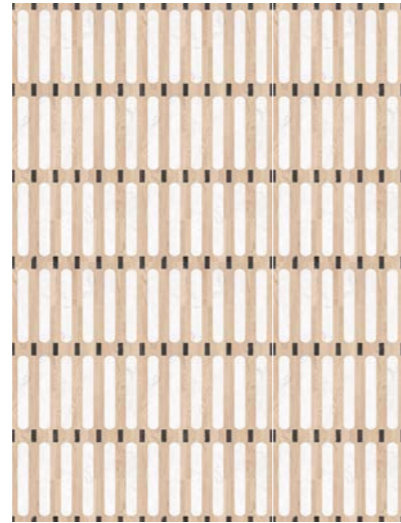
DOMUS  
60x120 24"x48"  
3D Honed 9 mm  
A2MAT00201TS ■



SVILUPPO GRAFICO - Graphic Development  
60x120 24"x48" pcs. 6



MODULA  
60x120 24"x48"  
3D Honed 9 mm  
A2MAT00200TS ■



SVILUPPO GRAFICO - Graphic Development  
60x120 24"x48" pcs. 6

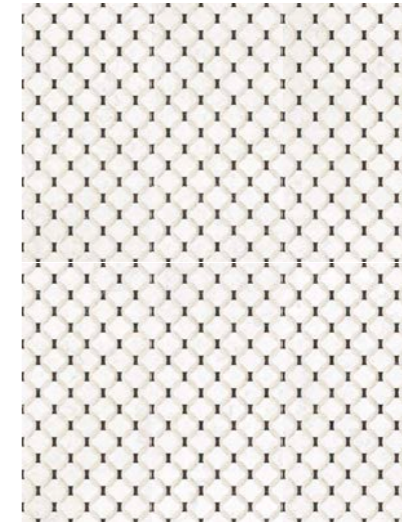
# Materia Viva

MARBLE EFFECT

## DECORI Decors



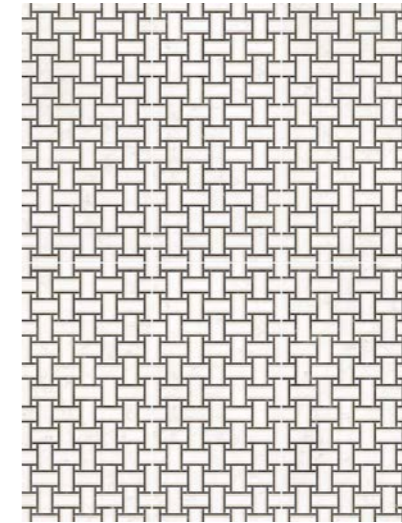
AURELIA  
60x120 24"x48"  
3D Honed 9 mm  
A2MAT00204TS ■



SVILUPPO GRAFICO - Graphic Development  
60x120 24"x48" pcs. 6

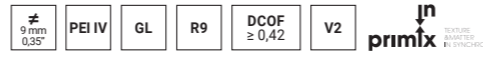


MIRO  
60x120 24"x48"  
3D Honed 9 mm  
A2MAT00202TS ■



SVILUPPO GRAFICO - Graphic Development  
60x120 24"x48" pcs. 6

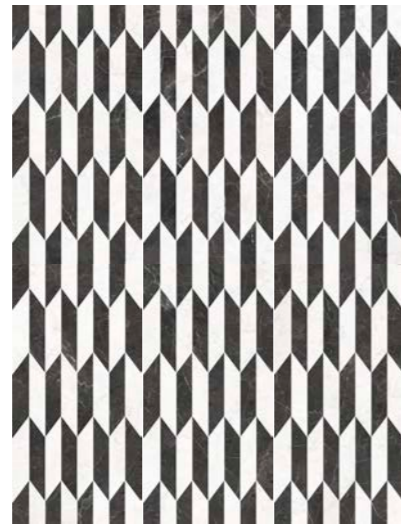
# Materia Viva



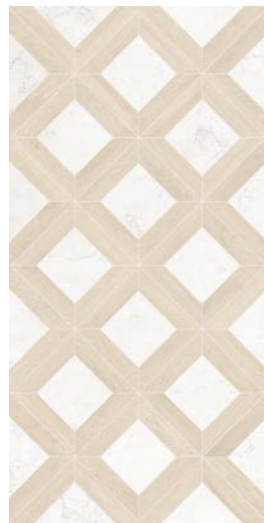
## DECORI Decors



**SIENNA**  
60x120 24"x48"  
3D Honed 9 mm  
**A2MAT00203TS** ■



**SVILUPPO GRAFICO** - Graphic Development  
60x120 24"x48" pcs. 6



**SQUARE**  
60x120 24"x48"  
3D Honed 9 mm  
**A2MAT00205TS** ■



**SVILUPPO GRAFICO** - Graphic Development  
60x120 24"x48" pcs. 6

# Materia Viva

MARBLE EFFECT

## DECORI Decors



**TULIO**  
60x120 24"x48"  
3D Honed 9 mm  
**A2MAT00207TS** ■



**SVILUPPO GRAFICO** - Graphic Development  
60x120 24"x48" pcs. 6

**\*Tutti i Decori Materia Viva sono rettificati al termine della lavorazione, questa operazione può comportare lievi discrepanze nell'allineamento del disegno sui quattro lati durante la posa. Al fine di rendere ottimale la posa del decoro è consigliato verificare il corretto verso ed allineamento prima della posa dello stesso. Per un risultato estetico migliore, suggeriamo di usare una fuga di 2 mm.**

Decors are rectified after processing; this operation may result in slight discrepancies in the alignment of the design on all four sides during installation. To ensure optimal installation of the decoration, it is recommended to verify the correct orientation and alignment before laying. For the best aesthetic result, we suggest using a 2 mm grout line.

## Linea guida di posa

Installation guideline

Questo documento fornisce le linee guida per la corretta posa dei decori che richiedono un orientamento direzionale delle piastrelle, identificato da una freccia riportata sul retro di ciascuna piastrella 60x120.

This document provides installation guidelines for all decors requiring directional laying, identified by an arrow engraved on the back of each tile.

### MODALITÀ DI POSA CONSIGLIATA, INDICAZIONI TECNICHE:

- Verificare la direzione della freccia prima della posa.
- Posare tutte le piastrelle nello stesso verso freccia.
- Controllare la resa visiva ogni 3-4 m<sup>2</sup> prima di procedere.

### RECOMMENDED LAYING METHOD – TECHNICAL INSTRUCTIONS:

- Check the arrow direction before laying.
- Install all tiles in the same direction.
- Verify alignment visually every 3-4 sqm.

### AVVERTENZE:

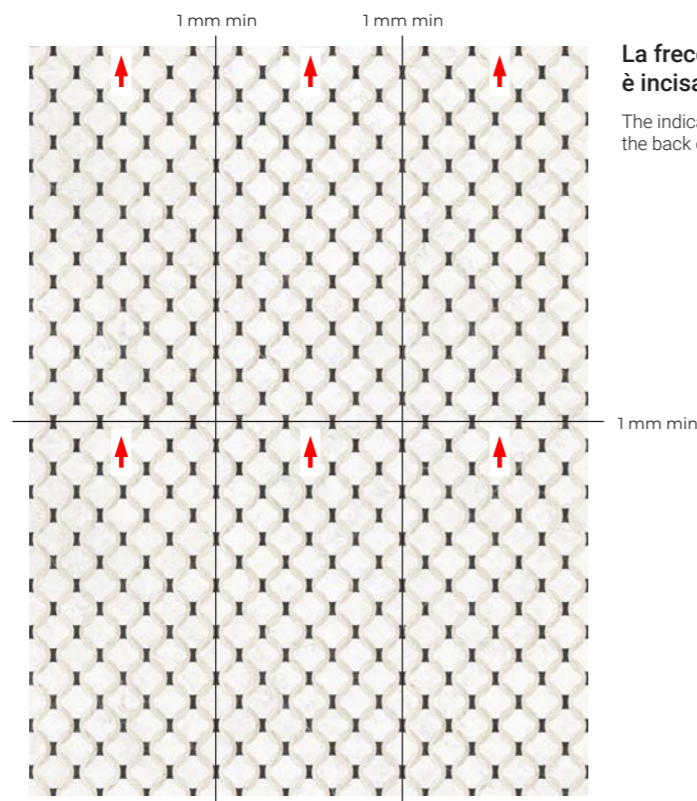
Non seguire la freccia può generare:

- Variazioni cromatiche percepite.
- Discontinuità ottiche tra lastre.
- Errori di allineamento nella continuità.

### WARNINGS:

Failure to follow the arrow may result in:

- Visible shade differences.
- Discontinuity in geometrical flow.
- Misalignment across installed tiles.



La freccia indicata è incisa nel retro piastrella.

The indicated arrow is engraved on the back of the tile.

## PEZZI SPECIALI

TRIMS



BATTISCOPIA  
7x60 3"x24" Rett 2 ▲

3D HONED

BIANCONE A2MAT90010B

MISTIK BROWN A2MAT90060B

## IMBALLI

PACKING

Formato Size	Spessore Thickness	Imballo Packing	Dimensione imballo L H	Pezzi totali Total pieces	Mq totali Total sqm	Kg/ Imballo Kg / Packing	Kg totali Total Kg	U.M. M.U.
119,7x280 47"x110"	6 mm	Cassa Crate	P 144,0 L 291,0 H 34,0	20	67,20	95	1104	■ €/mq
119,7x280 47"x110"	6 mm	Cavalletto Rack pallet	P 75,0 L 284,0 H 147,5	36	120,96	120	1935	■ €/mq

Size Formato	Thickness Spessore	Pieces / Box Pezzi / Scatola	Sqm / Box Mq / Scatola	Kg / Box Kg / Scatola	Boxes / Pallet Scatole / Pallet	Sqm / Pallet Mq / Pallet	Kg / Pallet Kg / Pallet	M.U. U.M.
119,7x119,7 47"x47"	9 mm	2	2,880	58,36	18	51,84	1050,50	■ €/mq
59,5x119,2 23,4"x47"	9 mm	2	1,440	29,60	36	51,84	1065,50	■ €/mq
59,5x59,5 23,4"x23,4"	9 mm	4	1,440	28,94	30	43,20	868,29	■ €/mq
29,6x59,5 11,7"x23,4"	9 mm	8	1,440	28,30	32	46,08	921	■ €/mq
59,5x119,2 23,4x47" DECORO	9 mm	2	1,440	29,60	36	51,84	1065,50	■ €/mq
29,7x29,7 11,8"x11,8" MOSAICO 5x5	9 mm	10						▲ €/pz
29,7x29,7 11,8"x11,8" MOSAICO INTARSIA	9 mm	6						▲ €/pz
29,7x59,7 11,8"x23,5" MOSAICO RITMO	9 mm	6						▲ €/pz
7X59,7 3,5"X23,5" BATTISCOPIA	9 mm	16						▲ €/pz

↓ TABELLA  
TECNICA



↓ TABELLA  
CODICI PREZZO



### LEGENDA CODICI PREZZO PRICE CODES LEGEND

- prezzo per mq / price per sqm
- ▲ prezzo al pezzo / price per piece
- prezzo al metro lineare / price to linear meter
- prezzo a composizione / price per set

Scan the QR Code to view the price codes  
Scansiona il QR Code per visualizzare i codici prezzo

**ASCOT** DOM  
DESIGN  
LAB

**ASCOT** DOM  
DESIGN  
LAB

Ascot Gruppo Ceramiche srl  
41014 Solignano di Castelvetro (MO) Italy  
Via Croce, 80  
Ph. +39 059 77 84 11  
Fax +39 059 77 84 44/43  
info@ascot.it  
ascotcer.it

A Brand of  VICTORIA PLC  
Ceramics Italy